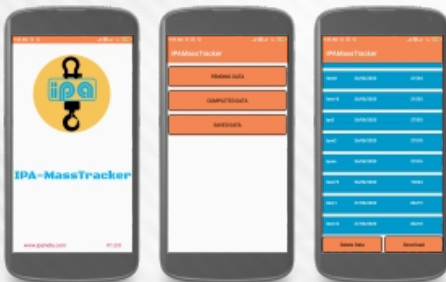


GUARDIAN-3 Crane Scale

Mobile App



Remote Control



MAIN FEATURES

- High Accuracy
- 7 segment 5 digit 50mm 1:5000 resolution LED displays.
- RF enabled Remote.
- Wi-Fi enabled Android application for mobile.
- Sleep mode (Programmable).
- Adaptive Brightness Control
- Self test on Power ON.
- Battery Power Indicator.
- Rugged multi-function key pad on Crane Scale/Remote.
- Certified Hook and Shackle



Adaptive Display Control

7 Segment, 5 Digit LED Display

LEDs for Battery Indication

Multi-functional Keypad

Guardian-3 Crane scale is an industrial grade portable scale on hook for measurement of weight. It can be used for indoor and outdoor purpose. The equipment comprises a strain gauge-based load cell with hook and bow shackle and related electronics. The instrument operates on a 6V rechargeable maintenance free sealed lead acid battery. All the operations of the crane scale can be carried using the remote also. The electronics and battery are enclosed in a rugged enclosure.

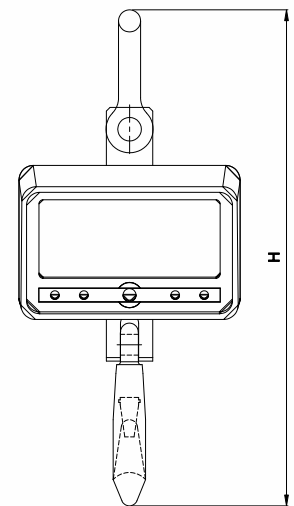
The 5 digit, 50mm LED Display displays the weight in kgs. The display is switched 'ON' by using the push button provided on the front panel of the scale. The system can be put on stand-by mode using sleep mode key. It will automatically be switched ON whenever a load is applied on the hook or press EXIT key in remote. The crane scale can run for 100 hrs uninterrupted in a single charge with Wi-Fi disabled and 50 hrs with Wi-Fi enabled. The battery charge level is indicated by green LEDs on the front panel.

The hook and bow shackles supplied are certified as per relevant Standards.

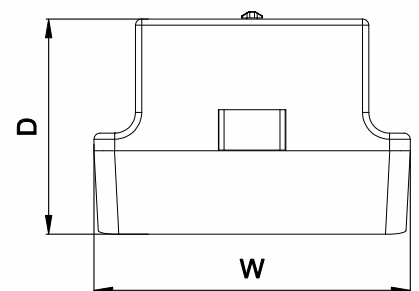
**CUSTOMIZATION
AVAILABLE
UP TO 100 TON**

Specifications

| Parameter | | | |
|---|--|-------------------------|--------|
| Capacity | | | |
| Model No. | CW-1 | CW-2 | CW-5 |
| Safe Working Load | 1t | 2t | 5t |
| Resolution | 200gms | 200gms | 500gms |
| Safe Maximum Load | 150% of SWL | | |
| Proof Load | 200% of SWL | | |
| Bow Shackles | As per IS 6132/72 | | |
| Hook | As per IS 3822/66 | | |
| Environmental | | | |
| Operating Temperature | 5-50°C | | |
| Crane Scale | | | |
| Display | 5 digit, 50mm, 7 segment LED Display | | |
| Power Source | 6V Rechargeable Sealed Lead Acid battery for Scale and 2 Nos. of 1.5V AA Battery for Remote | | |
| Battery life | Scale 100 hours (without Wi-Fi) and 50 hours (with Wi-Fi) Remote control 100 hours of operation | | |
| Brightness Adjustment | Adaptive Brightness Control | | |
| Battery Level Indication | On display | | |
| Sleep time | Settable from 0 – 999 second | | |
| Remote RF Frequency | 2.4 GHz | | |
| Remote Range | 50 m | | |
| Functions possible through remote control | Tare, Calibrate, Parameter Setting | | |
| Mechanical | | | |
| Dimensions | H-660mm W-305mm D-208mm | H-690mm W-305mm D-208mm | |
| Enclosure | Aluminum Casting | | |
| Paint | Anti-corrosive orange Powder Coating | | |
| Ingress Protection | IP-54 | | |
| Weight (including Hook and Shackle) | 17kg | | |



FRONT VIEW



TOP VIEW

(Hook and shackle not shown)

REMOTE CONTROL

RF enabled remote control module with 5 key functional keypad

Remote Control features:

The 5 key keypad RF enabled remote control operates in 2.4Ghz frequency with a maximum operating range upto 50 meters. An LED Indication is provided to Indicate the power ON condition.

The different keys used to perform different functions are:

- Tare
- Calibration
- Gross weight reading
- Clear
- Switch ON/OFF the Scale
- Parameter Setting



HOOK

Trapezoidal Eye Hook
Proof load: 200% of SWL
IS 3822/66

SHACKLE

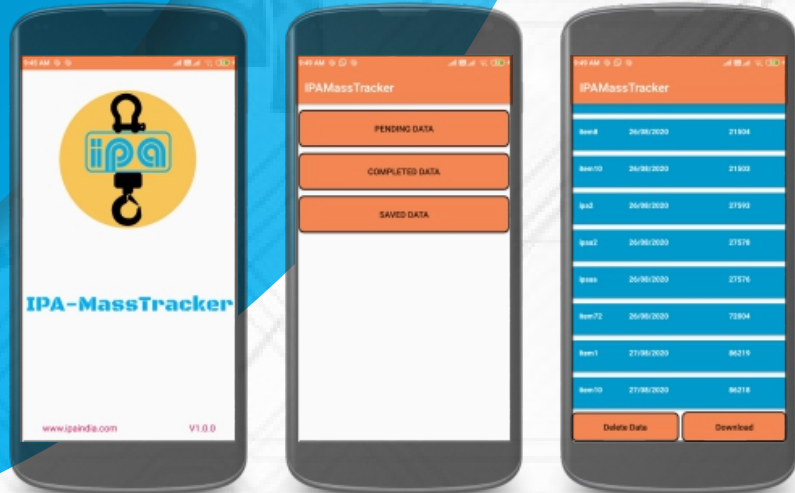
Bow shackle Screwed pin type with Collar and Eye.
Proof load: 200% of SWL
IS 6132/72 Part II



Mobile App

Features:

- Remote zeroing of the scale
- Totalizing of the readings
- Save for future use



- The App **Track Weights** can be downloaded from Google Play store. It can be used in Smartphones with Android version 4 or greater.
- The Scale acts as an access-point for the transmission of data.
- The mobile app is used for receiving the readings on the Scale. A distinct feature is being able to store a record of weighed values.
- This feature is extremely valuable in material handling industries, where the weight of different raw materials weighed at different times can be saved for future reference in the Smartphones.

Our range of products

- Strain Gauges
- Vibration Switch
- Loadcells
- Accelerometer
- Crane Overload Protection System
- Pressure Transducers
- Vibration Meter
- Angle Sensor
- Lorry Weighbridge
- Bagging System
- Crane Scale
- Check Weighers
- Force Calibrator
- Belt Weighers
- Tyre Inflator
- Axle Weighers
- Hopper/Tank/Silo Weighing Systems
- Vibration Transmitter
- Ladle Weighing System
- Weigh Feeder
- Handheld Vibration Meter
- Bag Check System
- Batching System
- Loss-in-weigh Feeder
- Screw Feeder
- Solid Flow-meter
- Throughput Weighing Instrumentation
- Indicators & Controllers
- Signal Conditioner
- Trip Safe
- On-line Weighing System

IPA Private Limited

472/B2, 12th Cross, IV Phase,
Peenya Industrial Area, Bangalore - 560 058
Ph: 2836 0253 / 2836 2851 Email: sales@ipaindia.com

www.ipaindia.com



Intertek

An ISO 9001 Certified Company



014